

# BLACKLAB BEERS

## Year Round

Favourites that can be found year-round

♥ **CLAUDIA**

India Pale Ale (IPA) 7%

---

**PUNTO DE ROCÍO**

American Pale Ale (APA) 5%

---

**1480**

American Pale Ale (APA) 5%

★ **SUNDAY PILS**

Pilsner 5.2%

## Specialty

Sour beers or beers whose flavours come from yeast, fruits, spices, etc.

★ **SOUR LADY**

Berliner Weisse  
with raspberries 4.2%



---

**WATERMELON MAN**

Wheat beer with watermelon 5.5%

---

**THE PATIENT**

Berliner Weisse with hibiscus 4.5%  
Part 1 of a trilogy collaboration with **NAPARBCN**

---

**THE GRUDGE**

Saison 6%  
Part 2 of a trilogy collaboration with **NAPARBCN**

---

**THE STRANGER**

Sour Saison 5.5%  
Part 3 of a trilogy collaboration with **NAPARBCN**

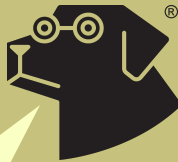
---

**CLAUDIA - PASSION  
FRUIT**

Fruit IPA 7%

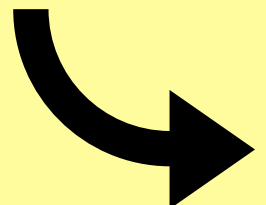
Our amazing IPA Claudia with lots of real  
passion fruit!

We love when you rate our beer and give us feedback, but we ask that you use Untappd or Beeradvocate to do so instead of Ratebeer. Ratebeer is partially owned by ABInBev, a company trying monopolize the beer world (again) and destroy independent craft beer.



♥ Our favourite

★ Award Gold Barcelona Beer Challenge 2017



# Hoppy

HOPS! And lots of them! Predominantly bitter and very aromatic

## BLACK COMEDY

American Black Ale (Black IPA) 6.9%

## JAPANESE TEA

India Pale Ale (IPA) 6.9%

# Strong

High alcohol, lots of flavor

## BLACKWAVE

Imperial Stout 9%

# Malty

Bready, caramel and toasted flavours

## TERRAPLANE

Robust Porter 5.2%

# Coming Soon

**OCTOBER LAGER (marzen)**

**CLAUDIA - CASCADE (IPA)**

# #BlackLabFacts

Curious about BlackLab?

In 2016 we brewed 60,000 Liters, 99% consumed at BlackLab!!

Watermelon Man gets most of its flavor from 90 Liters of watermelon juice. 150 kg cut and juiced by hand!

Claudia was one of the first recipes ever created by our brewer a long long time ago..

We serve some of our beers directly from the big tanks (brite tanks) in our cold room



normal      10.1      5.6      3.6

strong      11.4      6.2      4.2

Terrace surcharge +10%

We can't split bills due to IT limitations

If you wish not to open a tab, please order at the bar.

All BlackLab beers are brewed on premises.

Come inside and visit our brewery!

Meet our brewers on Sundays at the Beer Tour!